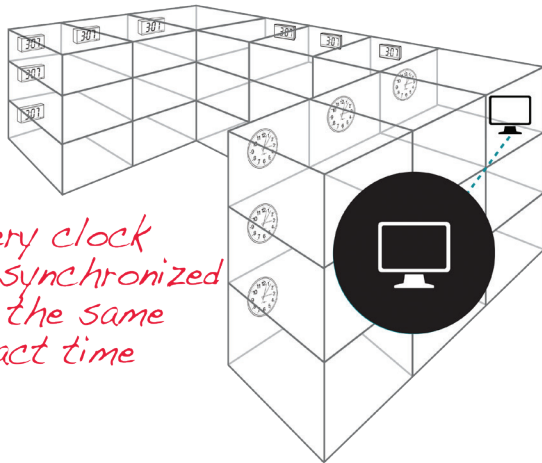




## Synchronized Clock System Software

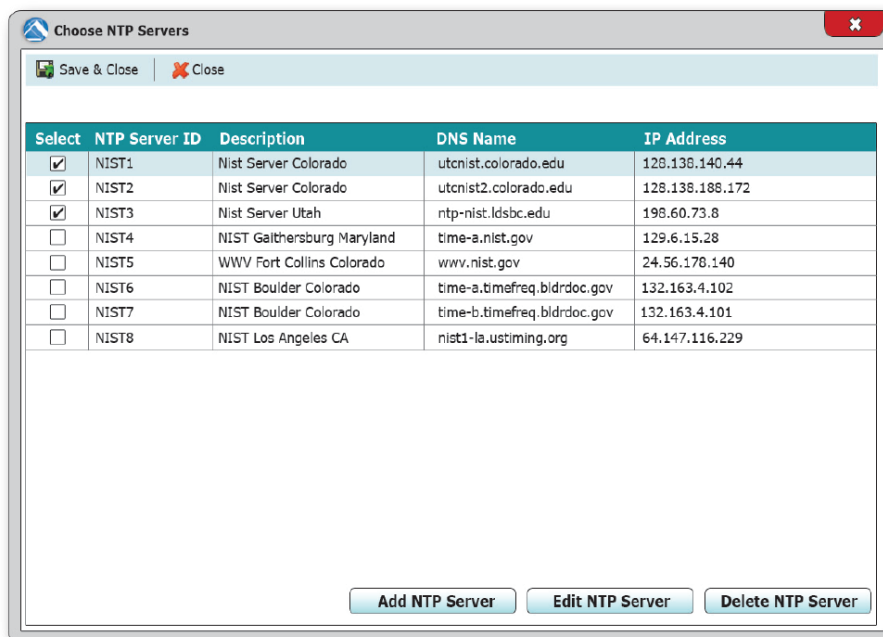
View, configure and monitor TimeTrax Sync™ RF Wireless Transmitters or PoE IP Network Synchronized Clocks.

TimeTrax Sync™ Clock System Software interfaces with TimeTrax Sync™ RF Wireless or PoE IP Network clock systems. Allows the user to view, monitor and configure every TimeTrax Sync™ RF Wireless Transmitter or PoE IP Network Synchronized Clock from a desktop PC. Enables network settings, NTP server selection, UTC/GMT offset selection, and automatic Daylight Saving Time Adjustments. Able to push individual or global settings to PoE IP Network Clocks, making an ideal solution for World Clock/Time Zone Offset applications. Software is included with TimeTrax Sync™ RF Wireless Transmitters (part #9T1WI, S9DWXSLAUB). PoE IP Network Synchronized Analog and Digital Clocks sold separately.



*Every clock is synchronized to the same exact time*

- Interfaces with TimeTrax Sync™ RF Wireless Transmitters (9T1WI, S9DWXSLAUB, S9DSXOLAUB, and 42337) and PoE IP Network Synchronized Analog Clocks (sold separately)
- Enables network settings, NTP server selection, Daylight Saving Time adjustments and universal or individual time source/zone selection (PoE IP Network Clock System)
- Enables bell scheduling
- Simple Windows® based user interface





## Synchronized Clock System Software

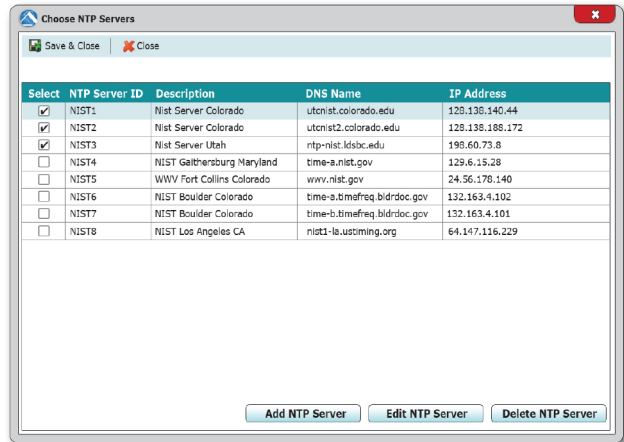
### SYSTEM REQUIREMENTS

Part #	SASDLCWDXX
Operating	Windows 10 and higher
PC	X64 Pentium 2 GHz Processor or higher
Memory	Minimum 8 GB RAM or greater
Free Space	20 GB or greater
Internet Browser	Chrome or Firefox

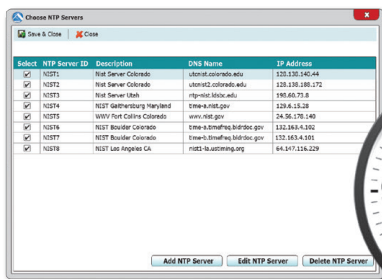
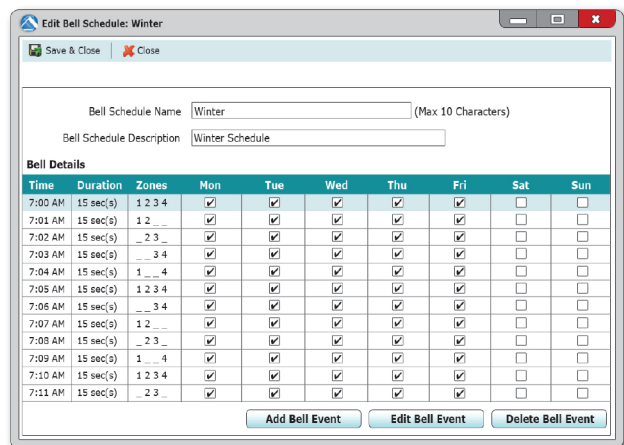
### SYNCHRONIZED DEVICES

	Transmitters	RF Wireless Transmitters 9T1WI S9DWXSLAUB S9DSXOLAUB 42337
	Analog Clocks	RF Wireless and PoE IP Network Synchronized Clocks
	Digital Clocks	RF Wireless and PoE IP Network Synchronized Clocks
	Bell Systems	5300 24 Volt Single Zone Bell Ringer

### NTP Server Selection



### Bell Scheduling



TimeTrax Sync™ software is included with RF Wireless Transmitters (part #9T1WI and S9DWXSLAUB) or may be purchased separately.

PoE IP Network Analog and Digital Clocks sold separately.

